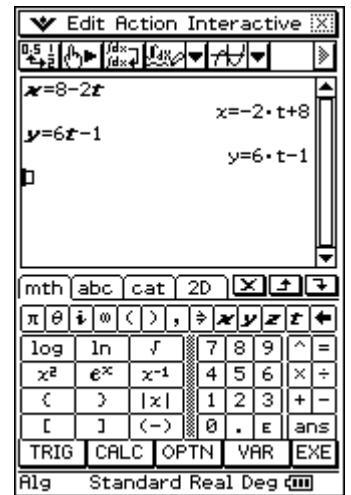


Classpad Help Series sponsored by Casio Education Australia		www.casioed.net.au	
042	Eliminate Function	Author	Charlie Watson
		Date	08 February 2009
		CPM OS	03.03.3000

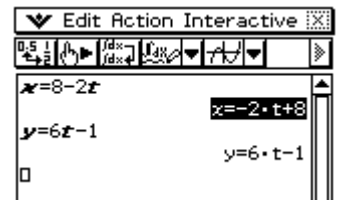
Example

If $x = 8 - 2t$ and $y = 6t - 1$ find an expression for y in terms of x .

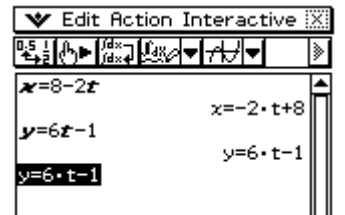
Start in Main and enter the two expressions.



Tap on the expression for x and take a copy.



Drag a copy of the expression for y into the cursor box and highlight it.

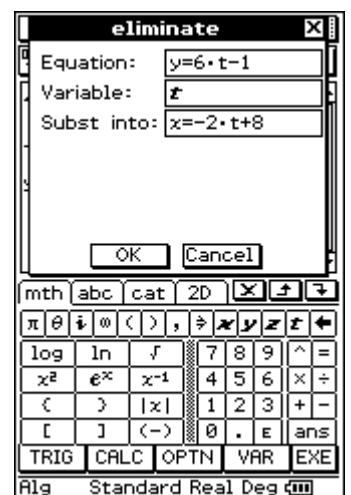


Tap **Interactive, Equation/Inequality, eliminate**.

The 'Equation' box already contains the expression for y .

Tap into the 'Variable' box and enter t , the variable to eliminate.

Tap into the 'Subst into' box and paste a copy of the expression for x .



Tap **OK**.

The result is $y = -3x + 23$ and the variable t has been eliminated.

